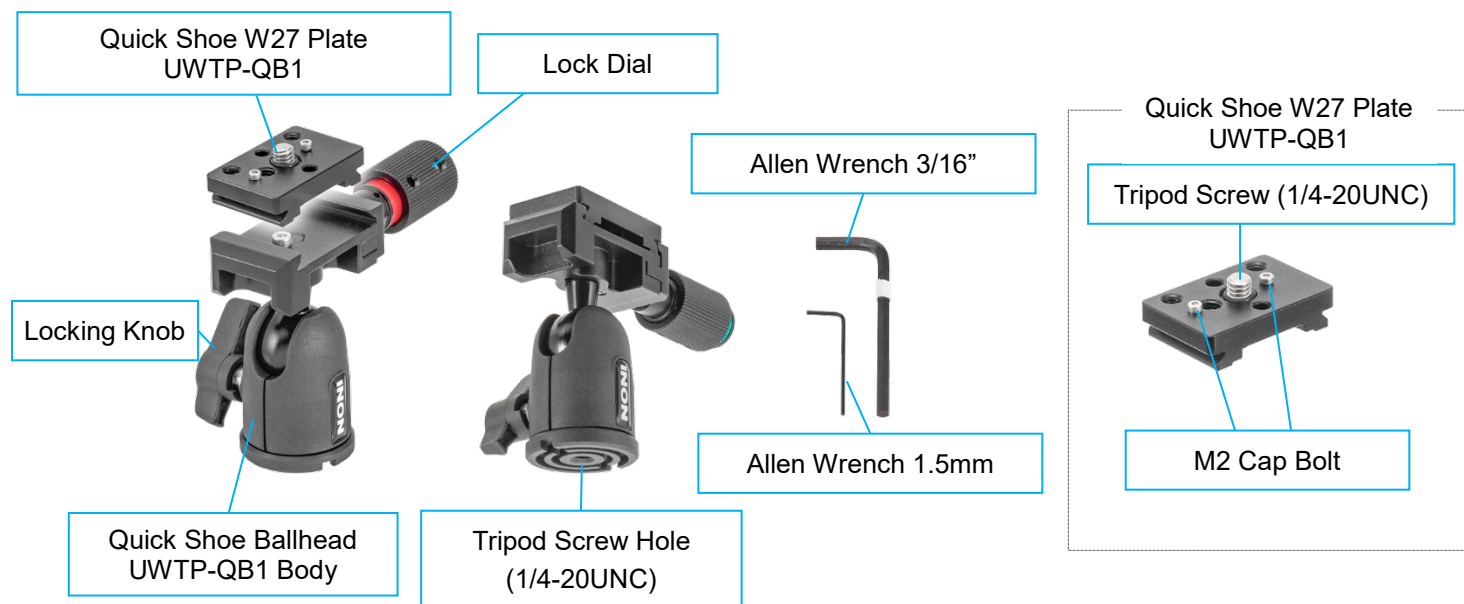


INON

Quick Shoe Ballhead UWTP-QB1

Package, name of Parts



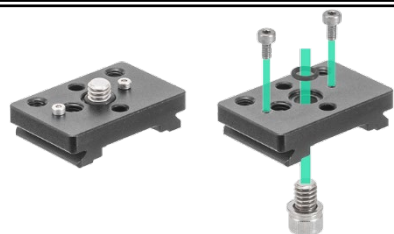
Installing Quick Shoe Plate



With the **Lock Dial** set to "red" (unlocked), insert the plate at an angle.

Turn the **Lock Dial** to the green position to lock.

Installing Options on Quick Shoe W27 Plate UWTP-QB1



To attach optional accessories to the "Quick Shoe Plate UWTP-QB1", remove the **M2 Cap Bolts** and/or **Tripod Screw (1/4-20 UNC)** as required. Use the included **3/16"** and **1.5 mm Allen wrenches**.

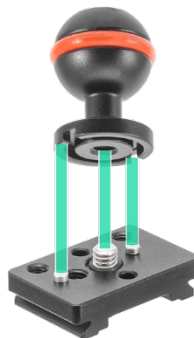


To fasten an optional accessory, tighten the **Tripod Screw (1/4-20UNC)** from the back of the "Quick Shoe W27 Plate UWTP-QB1" using the included **3/16"** Allen wrench as shown in the left image.

- Ball 1/4-20UNC Adapter

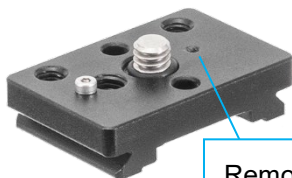


Keep the **Tripod Screw (1/4-20 UNC)** and **M2 Cap Bolts** installed

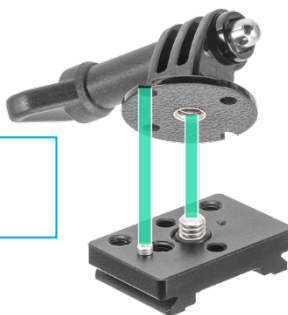


Tighten the **Tripod Screw (1/4-20 UNC)**

- GP 1/4-20UNC Adapter II

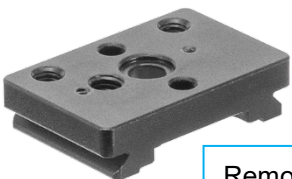


Remove the **M2 Cap Bolt** on this side.

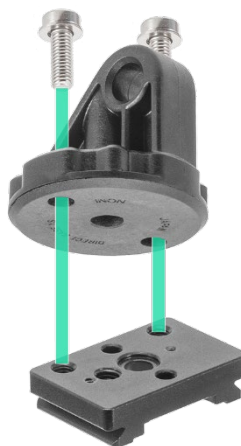


Tighten the **Tripod Screw (1/4-20 UNC)**

- Direct Base YS II

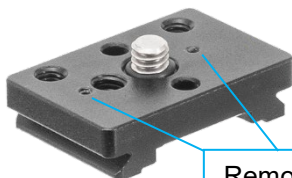


Remove the **Tripod Screw (1/4-20 UNC)** and two **M2 Cap Bolts**



Secure with the **M5 Cap Screws** included with the **"Direct Base YS II"**

- "Mount Adapter" supplied with ZD/SD Front Mask
- Single Light Holder · LE/LF for Tripod
- Tripod adapter
- Camera housing with a 1/4-inch 20UNC threaded hole (depth 5mm or more)

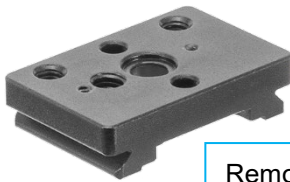


Remove both **M2 Cap Bolts**

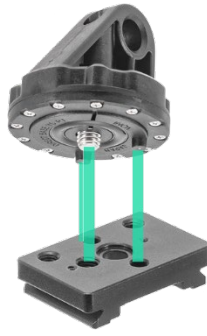


The tripod screw alone secures without anti-loosen feature. Beware it may loosen from sudden shocks.

● Direct Base YS RT



Remove the **Tripod Screw (1/4-20 UNC)** and two **M2 Cap Bolts**



Using the Allen wrench included with the "**Direct Base YS RT**", secure it directly to the plate.

● Direct Base III

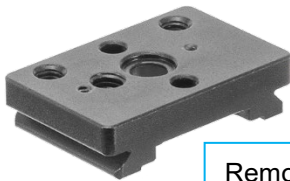
An optional "**M6 Spacer (6 mm)**" is required when installing the "**Direct Base III**."



Pull out the M6 cap bolt from the "**Direct Base III**"



Set the **M6 Spacer (6 mm)**



Remove the **Tripod Screw (1/4-20 UNC)** and two **M2 Cap Bolts**



Using the Allen wrench included with the "**Direct Base III**", secure it directly to the plate.

Maintenance

- After use, rinse with fresh water to remove salt and dirt. Then dry thoroughly in a well-ventilated, shaded area out of direct sunlight.
- DO NOT** expose the product to fire or high heat sources, as this may cause deformation or damage.
- DO NOT** use organic solvents such as alcohol, benzene, or thinner, or any rust inhibitors, lubricants, polish, or detergents (especially alkaline ones) during cleaning. Some components of this product may deteriorate, become brittle, or dissolve upon contact with such substances.
- To prevent corrosion due to electrolysis, apply grease regularly to all metal screw threads.

Storage

- After drying, store the product in a dry, well-ventilated place out of direct sunlight.
- Avoid storage in environments with chemicals (such as camphor or mothballs), or in cold, hot, or humid conditions, or areas with drastic temperature changes, as these may cause deformation, damage, mold, rust, or corrosion.
- Keep out of reach of children. Small parts and accessories may pose a choking hazard if swallowed. In case of accidental ingestion, consult a doctor immediately.

Specifications

Weight	Air: 169 g/ 6.0 oz u/w: Approx 112 g/ 4.0 oz
--------	---

INON INC.

2-18-9 Dai, Kamakura Kanagawa 247-0061 JAPAN
E-mail support@inon.co.jp URL <http://www.inon.jp/>
July 2025