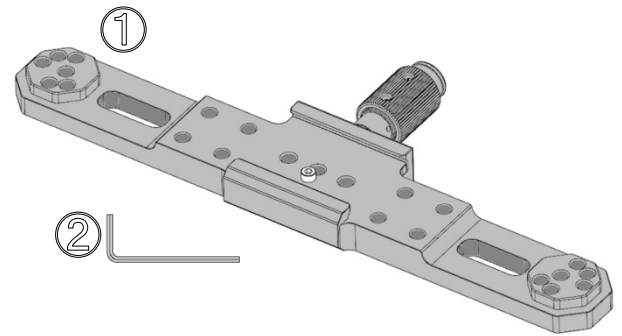


# INON

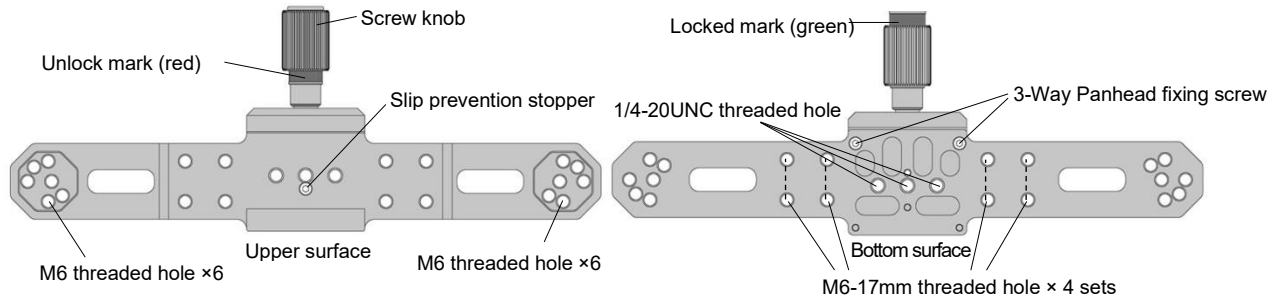
## Quick Shoe Main Base

### Package contents:

- Quick Shoe Main Base ① ×1
- Allen Wrench 2 mm ② ×1
- This user manual ×1



### Overview:



### Compatible products

#### [Quick Shoe]:

- Quick Shoe W50 Plate, Quick Shoe W27 Plate, Quick Shoe W95 Plate
- Quick Shoe L-Type Bracket

Note: Other brands' Arca-Swiss plate is **not** compatible with this product

#### [Arm Base (bottom surface)] :

- UW 3-Way Panhead, Quick Shoe W50 Plate, Quick Shoe W95 Plate

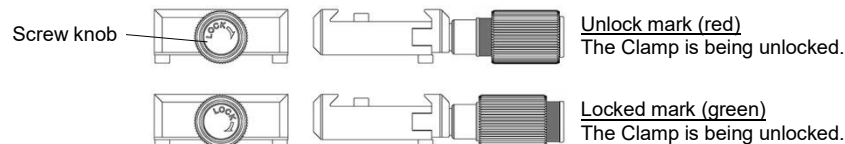
#### [Arm System]:

- D5 Holder, Quick Shoe W27 Clamp, Multi Direct Base IIa,
- Multi Direct Base II Long, Multi Direct Base II WB

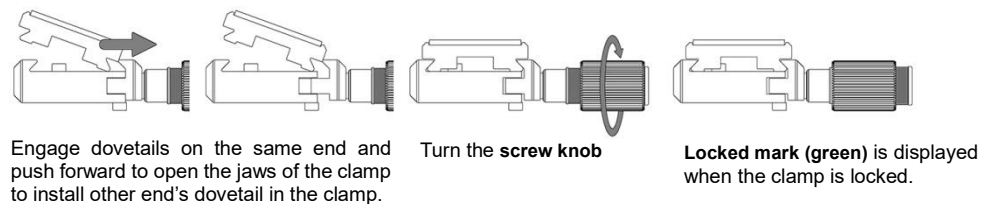
### Installation:

#### Quick Shoe Plate:

- Unlock the clamp of **Quick Shoe Main Base** by slowly turning the **screw knob** counterclockwise until **red unlock mark** is exposed. Turning the **screw knob** clockwise locks the clamp where **green lock mark** is exposed.



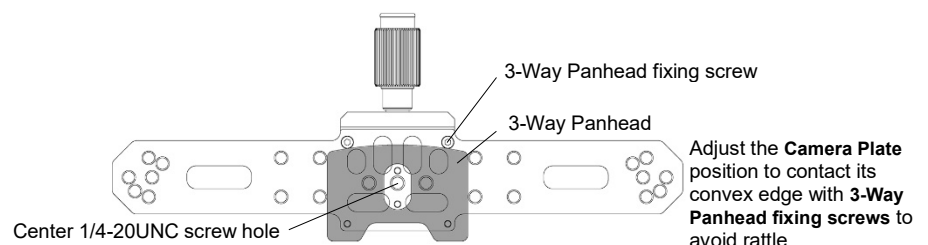
- Securely attach combined **Quick Shoe Plate** on the clamp of the **Quick Shoe Main Base** by engaging their dovetails one by one as per below illustration. Once dovetails have been securely engaged, keep turning the **screw knob** clockwise until **locked mark (green)** is displayed.



- Make sure to completely tighten the **screw knob** to securely lock the clamp to prevent the **Quick Shoe Plate** from accidentally sliding out of the clamp resulting in damage of combined product or personal injury.

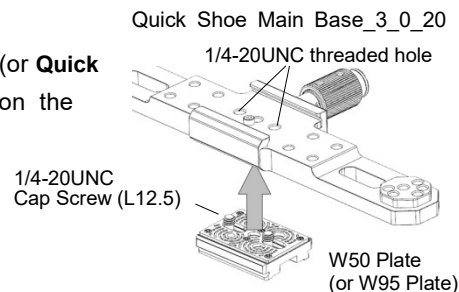
#### UW 3-Way Panhead:

- Screw the **tripod screw (1/4 in)** of the **UW 3-Way Panhead** into the center **1/4-20UNC threaded hole** on the bottom surface of the **Quick Shoe Main Base**.
- Adjust the **Camera Plate** position so that its convex edge contacts **3-Way Panhead fixing screws** of the clamp part to avoid accidental loose of the **tripod screw (1/4 in)** and rattle.



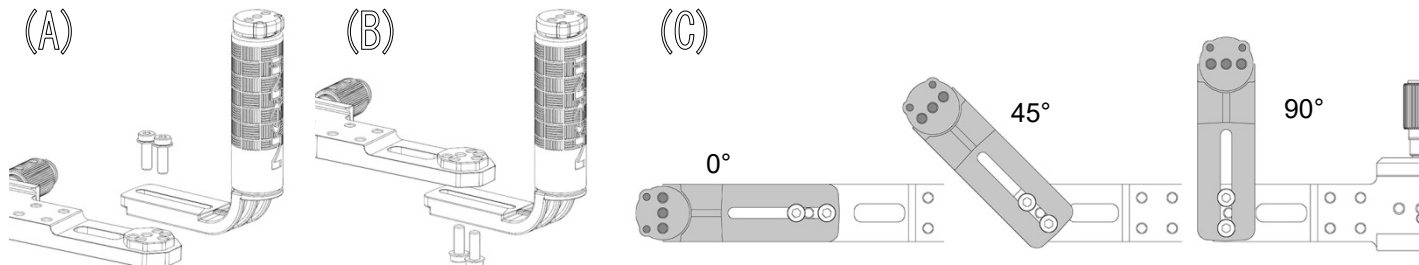
Quick Shoe W50 Plate:  
Quick Shoe W95 Plate

- Screw two **1/4-20UNC Cap Screws** of the **Quick Shoe W50 Plate** (or **Quick Shoe W95 Plate**) into the sides' **1/4-20UNC threaded holes** on the bottom surface of the **Quick Shoe Main Base** as shown in the right illustration.



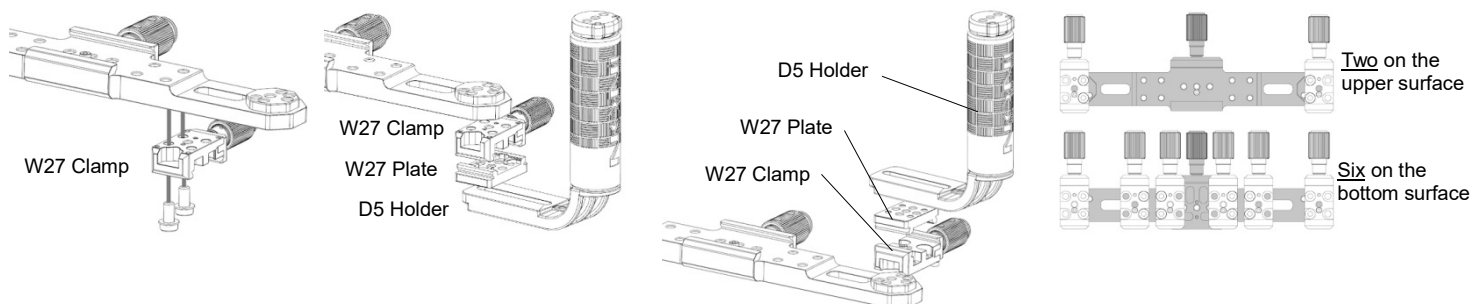
D5 Holder:

- **M6 threaded holes** on the sides can be coupled with the **D5 Holder**.
- The **D5 Holder** can be attached either surface of the **Quick Shoe Main Base (A)(B)**.
- The **D5 Holder** can be attached at an angle of 0, 45 or 90 degree to the **Quick Shoe Main Base (C)**.



Quick Shoe W27 Clamp:  
Multi Direct Base products

- **Quick Shoe W27 Clamp/Multi Direct Base** products can be attached on **M6-17 mm threaded holes** on the bottom surface or **M6 threaded holes** on sides of the **Quick Shoe Main Base**.
- Maximum eight **Quick Shoe W27 Clamps** can be attached on the **Quick Shoe Main Base** (two on the upper surface and six on the bottom surface).
- Maximum four **Multi Direct Base** products can be attached on the bottom surface of the **Quick Shoe Main Base**.



**Maintenance:**

- After using, soak in fresh water to dissolve remaining salt/remove dirt and dry it in shaded and well ventilated area. Never apply flame or direct heat to this product or damage may result.
- **DO NOT** clean with organic solvent like alcohol, benzene or thinner and oil and fat containing/chemical material like rust inhibitor, lubricant, polish, detergent (especially alkaline detergent) to avoid damage/deformation/degradation of this product.
- Periodically apply grease on metal part of screws to prevent them from rusting.

**Storage:**

- After completely dry, store out of direct sunlight in well-ventilated, dry area. Avoid storing near chemicals, high ozone, large temperature and humidity fluctuations to avoid deformation, damage, rust, mold or corrosion etc.
- Keep the product out of reach of children. They may swallow parts of this product. See a doctor immediately if a child swallow parts.

**Handling:**

- Make sure to follow installation procedures described in this manual. Insufficient tightening of the **screw knob** may lead to accidental separation/damage/loss of combined products and/or damage.
- **DO NOT** use this product for non-compatible products to avoid accidental separation/damage/loss of combined products. Use only with compatible products listed in this user manual.
- Securely hold this product/combined products during transportation of whole system without applying excessive shock, vibration and/or pressure. **DO NOT** hold compatible products only to transport whole system to avoid accidental separation/damage/loss of combined housing/products.

INON INC. 2-18-9, Dai, Kamakura, Kanagawa 247-0061 JAPAN  
E-mail [support@inon.co.jp](mailto:support@inon.co.jp), Fax +81(0)467-48-2178  
URL <http://www.inon.jp/> As of September 2020