

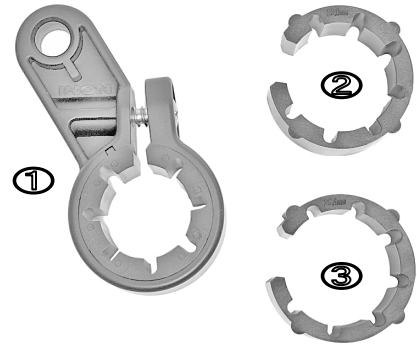
INON

INON Bar Mount

Thank you for purchasing INON product.

The INON Bar Mount holds compatible INON LED flashlight on compatible bar in combination with compatible INON arm like「Single Light Holder・LE」to use the LED flashlight in many fields underwater and on land such as sub lighting equipment for a bicycle.

- Package contents:**
- (Bar Mount Body① x1
 { ϕ 22.2 Spacer x1
 5x20 Button Screw x1 }
• ϕ 23.8 Spacer② x1
• ϕ 25.4 Spacer③ x1
• This user manual x1



- Compatible Strobe:**
- 1) Below listed INON "LED flashlight" attached on INON "Light Holder" products
 - 2) Below listed INON "strobe" attached on INON "Z Joint"
 - 3) Below listed INON "LED flashlight/strobe" attached on INON "Strobe Light Holder・LE" and INON "Z Joint".

【LED flashlight】

INON 「LE350」, 「LE250」

INON 「LE240」(※), 「LE550-S」(※), 「LE550-W」(※), 「LE700-S」(※), 「LE700-W」(※)

(※)LE240, LE550-S, LE550-W, LE700-S and LE700-W is underwater use only.

【Strobe】

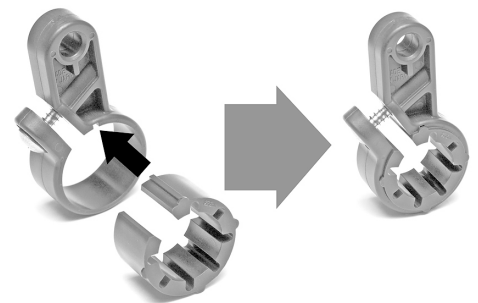
INON 「S-2000」, 「Z-240」, 「D-2000」, 「D-2000S」, 「D-2000W/Wn」

INON 「D-180」, 「D-180S」

- Compatible Light Holder product:**
- INON Single Light Holder LE, Strobe Light Holder LE + Z Joint → Usable underwater/air
 - INON Double Light Holder LE + Z Joint, Quad Light Holder LE + Z Joint → Usable underwater

Compatible Bar : ϕ 22.2mm(7/8 in.) ~ ϕ 25.4mm (1in.), ϕ 31.8mm (1-1/4in.)

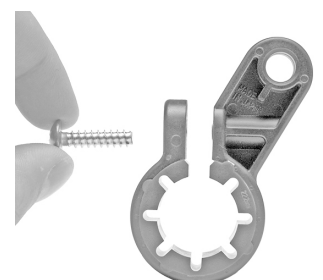
- Attaching on compatible bar :**
1. Attach a spacer on 「Bar Mount Body」
Select either of 「 ϕ 22.2 Spacer」, 「 ϕ 23.8 Spacer」 or 「 ϕ 25.4 Spacer」 according to outer diameter of the combined bar and set the spacer on the「Bar Mount Body」 so that the ridge on the spacer seats in the groove of the 「Bar Mount Body」 as show in image right.



- Spacer is not necessary when attaching to a bar of ϕ 31.8mm outer diameter.
- Name of spacer stands for inner diameter of the spacer.
e.g.) ϕ 22.2 Spacer → inner diameter of the spacer is 22.2mm
- Each spacer has punch mark showing its inner diameter to distinguish each spacer
- The 「 ϕ 22.2 Spacer」 is pre-installed in the「Bar Mount Body」.

2. Remove「5x20 Button Screw」from「Bar Mount Body」

Separate「5x20 Button Screw」and「Bar Mount Body」by a No.2 Phillips screwdriver. Removed screw is necessary to attach this product on compatible bar



3. Attach 「Bar Mount Body」 on a bar

Attach the 「Bar Mount Body」 on a bar then fasten it with removed「5 x 20 Button Screw」by using Philips screwdriver No.2.

- Depending on bar diameter/shape, it may be difficult to attach the「Bar Mount Body」with a spacer. In such a case, attach the「Bar Mount Body」and spacer separately on a bar then set the spacer in the「Bar Mount Body」
- Be sure to use appropriate size of spacer and tighten the「5x20 Button Screw」not too tight to prevent accidental damage of this product.



- Maintenance** :
- After dive clean with fresh water to remove salt etc. and dry the product completely in shaded and well ventilated area. DO NOT expose the product to flame or heat to prevent deformation or damage.
 - Do not clean with organic solvent like alcohol, benzene or thinner and oil and fat containing/chemical material like rust inhibitor, lubricant, polish. Do not wash with any alkaline or chemical cleaning agents. This product is made from POM etc. which will dissolve or deform if put in contact with such materials.

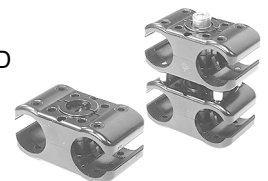
- Storage** :
- Store out of direct sunlight in well-ventilated and dry area. Avoid storing near chemicals, high ozone, large temperature and humidity fluctuations and magnetic fields (TV sets etc.) to avoid deformation/damage, mold/rust or corrosion etc.
 - Keep this product out of reach of children. They may swallow small parts of this product. See a doctor immediately if a child swallow parts.

- Handling:**
- Make sure to tighten the「5x20 Button Screw」properly not too tight or not too loose to prevent accidental separation/damage/loss of combined LED flashlight etc.

- Options** :
- Single Light Holder LE
Optional product to attach single INON LE series LED flashlight on this product.



- Double Light Holder LE (left in the image)
- Quad Light Holder LE (right in the image)
Optional product for sole use underwater to attach 2 or 4 INON LE series LED flashlight on this product via optional INON 「Z Joint」.



Double Light Holder LE : Holds 2 x INON LE series LED flashlights

Quad Light Holder LE : Holds 2 or 4 x INON LE series LED flashlights

- Strobe Light Holder LE
Optional product to attach one or two INON LE series LED flashlight on this product via optional INON 「Z Joint」 together with INON 「S-2000」, 「D-2000」or「Z-240」etc.



- Z Joint
Optional product to attach 「Double Light Holder LE」/「Quad Light Holder LE」/「Strobe Light Holder LE」on this product.



INON Bar Mount Specifications [*1]	
Model	Bar Mount
Size	W: 24mm/0.9" x H: 40mm/1.6" x D: 32.5mm/1.3"
Weight	【with φ 22.2 Spacer】 25.2g/0.9oz (air) / approx. 9.3g/0.3oz (underwater)
	【with φ 23.8 Spacer】 24.3g/0.9oz (air) / approx. 9.0g/0.3oz (underwater)
	【with φ 25.4 Spacer】 23.6g/0.8oz (air) / approx. 8.5g/0.3oz (underwater)
Material/finishing	POM, stainless etc.

*1 Subject to change without prior notice.

INON Inc.

2-18-9, Dai, Kamakura,
Kanagawa 247-0061 JAPAN
E-mail support@inon.co.jp
Fax. +81(0)467-48-2178
URL http://www.inon.co.jp/

August 2013