

INON UCL-G55 ZD

Underwater Close-up Lens

User Manual

Safety Precautions

- Before using your lens, please ensure that you have read and understood the safety precautions described below and user manuals. Please retain user manuals handy for easy reference.
- The safety precautions are intended to instruct you in the safe and correct operation of the strobe to prevent injuries or damage to yourself, other persons and equipment.



WARNING

Failure to observe the precautions described below may lead to possibility of serious injury or death.

Never attempt to see the sun or strong light source through the lens or camera to avoid irreparable injury to the eyes, or temporary visual impairment which may affect your performance requiring safety aspects.

Do not leave the lens in a place subject to direct sunlight to prevent fire which may be caused by the lens collecting sunlight

INON

INON UCL-G55 ZD Underwater Close-up Lens

Thank you for purchasing INON product.

The INON **UCL-G55 ZD Underwater Close-up Lens** is dedicated wet lens designed for action cameras enabling super close-up/high magnification imaging which would not be possible with camera standalone.

Compatible Product

Besides your camera, this lens **requires INON ZD Front Mask** and **genuine housing**. Check below table to prepare necessary item(s).

Manufacture	Camera	Genuine housing	INON Front Mask
GoPro	HERO13/12/11/10/9 Black	Dive Housing (for HERO13/12/11/10/9 Black)	ZD Front Mask for HERO12
Insta360	Ace Pro	Dive Case (for Insta360 Ace Pro)	ZD Front Mask for Ace Pro
	Ace Pro 2	Dive Case (for Insta360 Ace Pro 2)	ZD Front Mask for Ace Pro 2
	GO Ultra	Dive Case (for Insta360 GO Ultra)	ZD Front Mask for GO Ultra
DJI	Osmo Action 5 Pro	Waterproof Case for Osmo Action 5 Pro	ZD Front Mask for Osmo Action 5 Pro
	Osmo Action 6	Waterproof Case for Osmo Action 6	ZD Front Mask for Osmo Action 6

Features

- This lens drastically shortens **minimum focus distance underwater to 4.8cm/1.9in (or 5.0cm/2.0in)** supporting high magnification/close-up image.
- Specifically designed for super macro imaging with **Depth of Field (DoF): 4.8cm/1.9in – 6.2cm/2.4in (or 5.0cm/2.0in – 5.85cm/2.3in)** and **underwater field of view 45 degree**. (*U/W angle of view without the lens is 94 degrees and DoF is from 60cm/2.0ft to infinity)
- ⚠ **Since DoF is shallow, it is recommended to use a tripod etc. to fix the camera position to keep a subject in focus.**
- Packaged **Focus Stick (PAT.P)** greatly reduces blur clips as it provides visual reference of the depth of field.
- Bayonet **INON ZD Mount** compatible to support friendly and speedy lens exchange underwater.
- Optional **INON ZD Lens Holder** can hold the **UCL-G55 ZD** when the lens is not in use.

Package contents

- UCL-G55 ZD Underwater Close-up Lens ①
- Front Lens Cap (rubber/with lanyard) ②
- Rear Lens Cap (PC) ③
- Focus Stick package ④
 - Focus Stick II ⑤
 - Focus Stick Retainer ⑥
 - Focus Stick Front Cap ⑦
 - Anti-rotation Pin ⑧ x 3 (incl. a spare)
 - Strap ⑨
- Detachable Strap ⑩
- Pouch

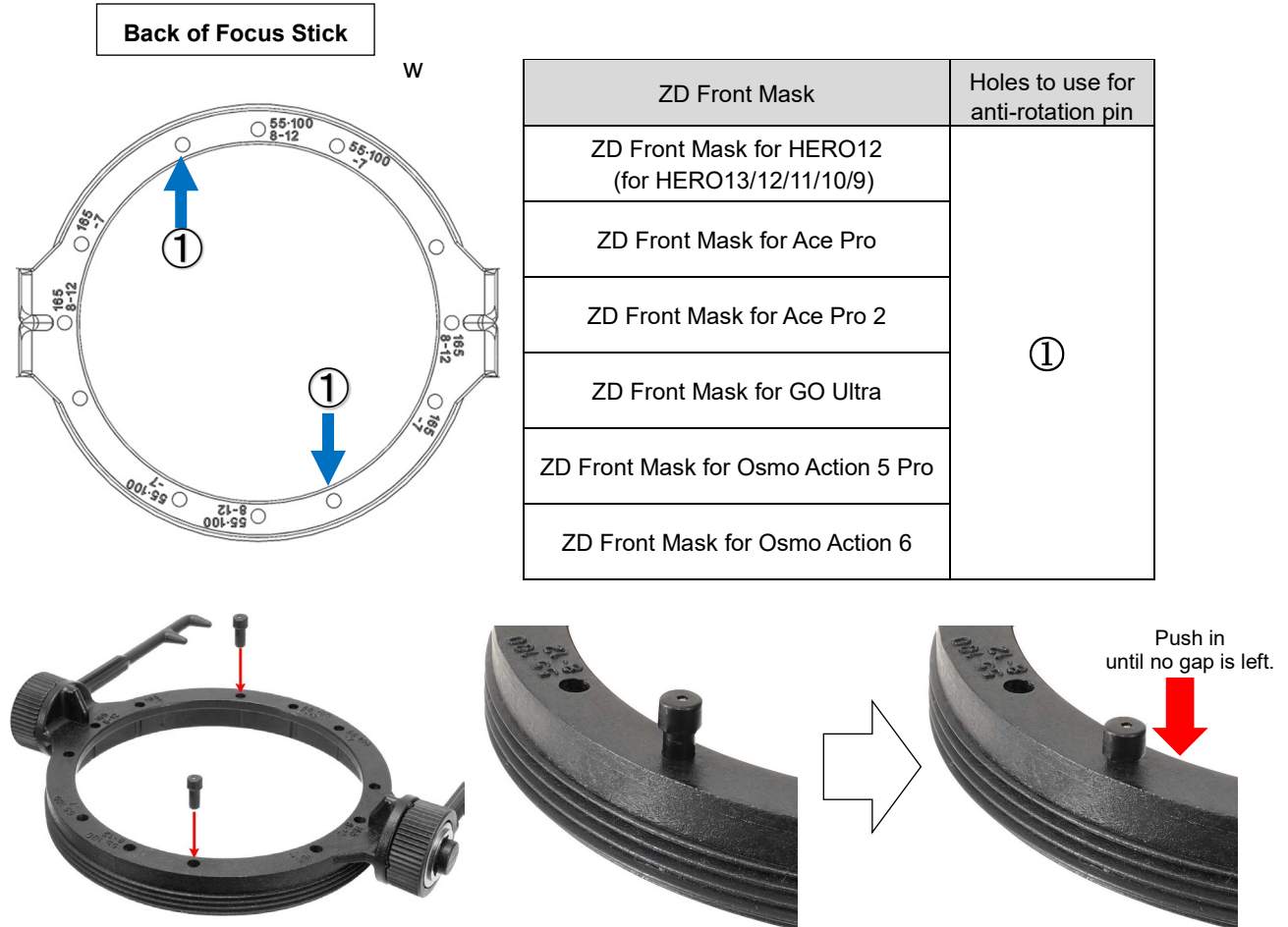


Installing *Focus Stick* on the lens

It is recommended to use *Focus Stick* to ensure proper focusing without blur.

- ① Insert the "Anti-rotation Pin" into the two designated holes from the **back** of *Focus Stick* as show in the below image.

The designated holes vary depending on the "ZD Front Mask" to use. Insert the anti-rotation pin according to the below figure/table, and push in firmly all the way by using a hard object such as a hex wrench or a coin.



- ② Place the *Focus Stick* facing up and align either of the two protruding "anti-rotation pins" with the grooves.

Depending on the grooves to use, *Focus Stick* can be installed either horizontally or vertically.

Below shows when installing *Focus Stick* for horizontal orientation.

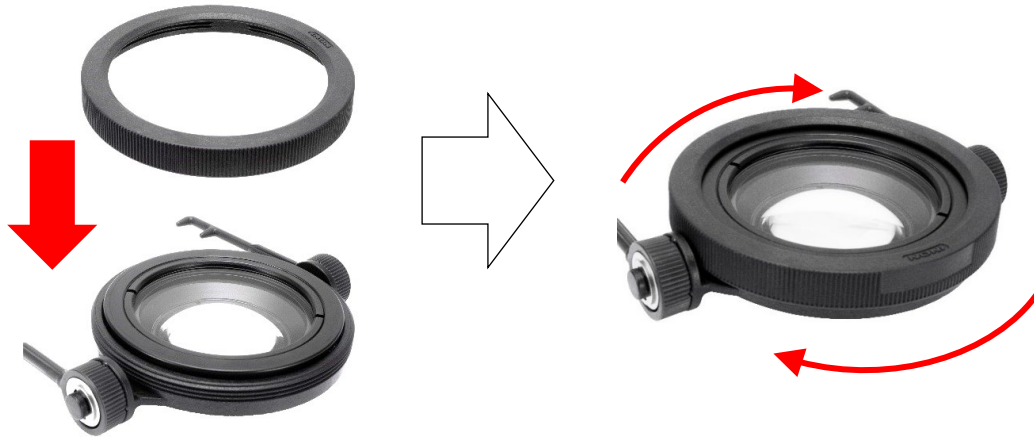
When installing vertically, use other two grooves.



※When installing *Focus Stick* with horizontally

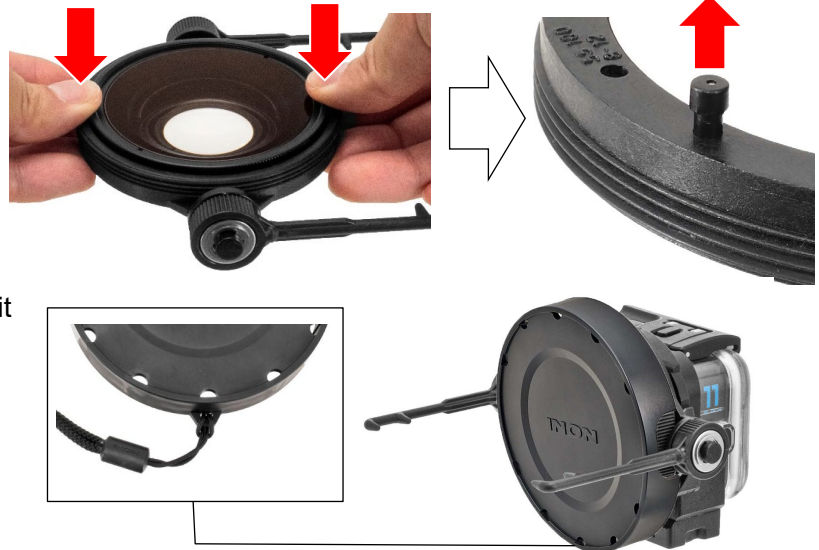
③ Secure the *Focus Stick* and the lens with the *Focus Stick* retainer.

Screw the *Focus Stick* retainer onto the *Focus Stick* threads with holding the *Focus Stick* and lens not to slip out of the groove of the lens barrel. Be careful not to over-tighten the *Focus Stick* retainer.



How to remove anti-rotation pin

Remove the *Focus Stick* retainer. Pull up the lens a bit to **disengage the pin heads from the grooves** and turn the lens slightly. Push the lens with holding the *Focus Stick* from the back until you hear crackling sound and pull out pins from the back. If the pin is stuck, use pliers or the like to gently grasp it and pull it out.



Focus Stick Front Cap/Strap

A lens cap when the lens is attached with the *Focus Stick*. Packaged strap can be attached.

Installing on ZD Front Mask

- Match **Guide A [Lens]** with **Guide A [Mask]** as in below left image and put the male bayonet mount of the lens in the ZD bayonet mount.
- Rotate the lens clockwise until **Guide A [Lens]** is coupled with **Guide B [Mask]** where you should feel and hear clicking.
- When removing the lens, **with pressing the Lock Lever**, rotate the lens counterclockwise.

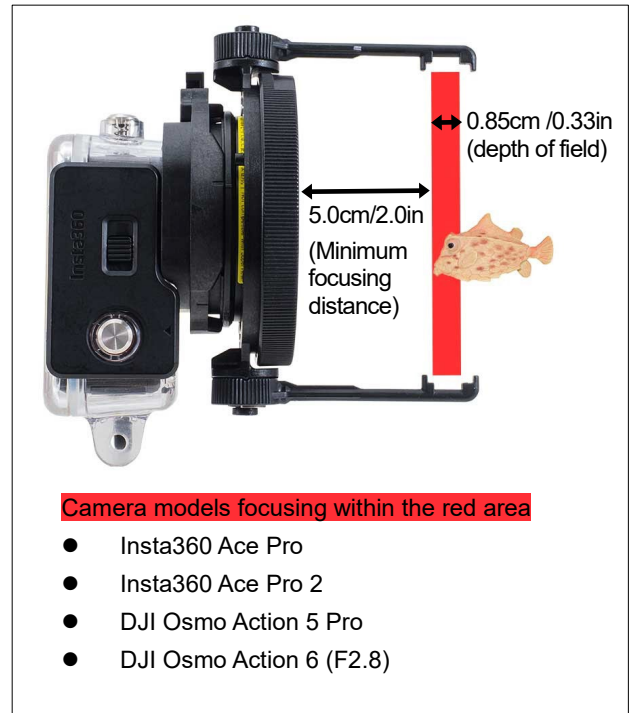
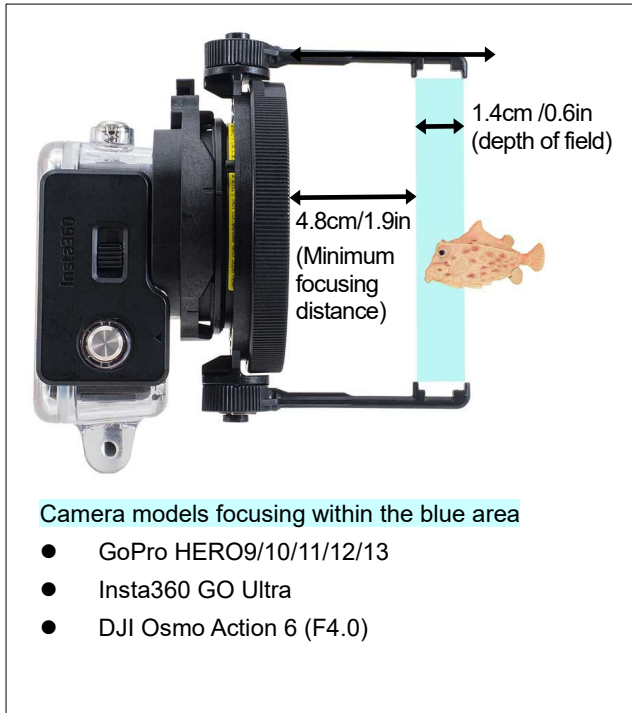
⚠ When unlocking, press the lock lever firmly before turning the lens. The lens will not unlock if any force is applied to the lens before the lock lever is pressed.



- Once submerged, remove the lens underwater and shake it well** to drop trapped bubbles especially from the rear lens surface then install the lens on the *ZD Front Mask* again following same procedure.

Focusing

The **UCL-G55 ZD** focuses a subject within a range of **4.8cm/1.9in to 6.2cm/2.4in (or 5.0cm/2.0in – 5.85cm/2.3in) from the lens**. Using the *Focus Stick* as a guide, you can capture the subject in focus easily. Please refer to the below images to see dept of field. The depth of field (range in focus) varies depending on the model/setting you are using. Please refer to the image below.



The *Focus Stick* can be rotated 360 degree with 90 degree stops making it easy to flip up instantly if necessary.



Attaching Strap

The lens mount has a **strap eyelet**. Attach the supplied detachable strap to prevent accidental falling of the lens.



Usage

- ***This lens is designed only for underwater use.*** On land, the lens cannot focus on distant subjects, and the apparent angle of view is reduced.
- For ***the*** available shooting modes for each camera model, please refer to the “Compatibility Chart” on our website.

Handling Precaution

- Follow instruction/procedure in this manual to properly install the lens on the *Front Mask* and make sure to check if the lens is properly installed. The lens may be dropped when hitting on a rock etc. When using underwater, periodically check if the lens is firmly attached on the housing.
- **DO NOT** hold this product or *Focus Stick* only to transport whole system to avoid accidental damage on this product or separation of combined Front mask. Hold the *camera system* during transportation.
- After using, never put the lens caps on or place the lens in a wet carry pouch with any water (salt or fresh) remaining on the lens surfaces. Doing so may degrade the glass coatings or the glass itself, or cause spotting or discoloration. Heavy surface degradation would necessitate replacing the damaged lens element(s) which is **NOT** covered by warranty.
- **DO NOT** *disassemble*. Disassembling lens could cause damage and subsequent flooding, and will void warranty.
- **DO NOT** subject lens to large shocks or vibrations, which can lead to damage and possible flooding.
- **DO NOT** leave lens exposed to strong sunlight as the lens will collect and concentrate the sunlight, creating a fire hazard. Never attempt to see the sun or strong light source through the lens or camera to avoid irreparable injury to the eyes.
- **DO NOT** leave lens exposed to strong sunlight such as a boat deck or to high temperatures like in sun-heated car etc. to prevent damage and subsequent flooding.
- **DO NOT** use the lens if you observe any damage on the lens surface to avoid possible flooding.

Maintenance

[Lens]

- After using, **always remove the lens from the Front Mask** and separate the *Focus Stick*. Then soak the lens in fresh water (below 30°C/ 86°F) for several hours to dissolve any remaining salt and **blow off water droplets** by compressed air etc. Leave the lens at shaded and well-ventilated area to dry **with no water drops on the both lens surfaces** (it may take several days to completely dry).

[Focus Stick]

- After using, **always remove from the lens** and soak in fresh water (below 30°C/ 86°F) and leave at shaded and well-ventilated area to dry. **DO NOT** dry with heat or flame to avoid deformation or damage.
- **DO NOT** clean with organic solvent like alcohol, benzene or thinner and oil and fat containing / chemical material like rust inhibitor, lubricant, polish, detergent (especially polyoxymethylene) to avoid damage/deformation/degradation of this product.

Storage

- **After completely dry, put lens caps on,** and store out of direct sunlight and well-ventilated area. **DO NOT** store the lens in area with chemical fumes, high humidity or extreme temperature fluctuations. Storage in such area may lead to damage, water leakage, lens surface degradation or mold.
- Keep the product out of reach of children. They may swallow parts of this product. See a doctor **immediately** if a child swallow parts.

Specifications

INON UCL-G55 ZD Underwater Close-up Lens Specifications (*1)

Model	UCL-G55 ZD
Size	[Lens] ϕ 77mm/3.0in \times 25.2mm/1.0in [With Focus Stick] W121x H91 x D87mm/W4.8 x H3.6 x D3.4in [With Focus Stick *retracted] W121x H120 x D28mm/W4.8 x H4.7 x D1.1in
Weight	189g/6.7oz [lens standalone/air] 45.4g/1.6oz [Focus Stick/air] 119g/4.2oz [lens attached with Focus Stick/underwater]
Lens mount	INON ZD Mount
Depth rating	60m/197ft
Body material/finishing	Corrosion-resistant aluminum alloy/rigid black almite, PC etc.
Lens material/finishing	Optical glass/both side coating
Optical construction	2 groups 3 elements
Depth of field (*2)	4.8cm/1.9in – 6.2cm/2.4in
Underwater angle of view	Approx 45 degrees (underwater use only)

Depth of field with UCL-G55 ZD (*2)

Mfr.	Camera	DoF	Remarks
GoPro	HERO13/12/11/10/9 Black	48mm/1.9in - 62mm/2.4in	
Insta360	Ace Pro 2	50mm/2.0in - 58.5mm/2.3in	
	Ace Pro	50mm/2.0in - 58.5mm/2.3in	
	GO Ultra	48mm/1.9in - 62mm/2.4in	
DJI	Osmo Action 6 (F2.8)	50mm/2.0in - 58.5mm/2.3in	
	Osmo Action 6 (F4.0)	48mm/1.9in - 62mm/2.4in	
	Osmo Action 5 Pro	50mm/2.0in - 58.5mm/2.3in	

(*1) Specification is subject to change without prior notice

(*2) Measured DoF from foreground of the lens surface. Divide by 1.33 for visual distance underwater.

(*3) All brand name, product name and function name in this manual are trademarks or registered trademarks of respective manufactures

INON Inc.

2-18-9, Dai, Kamakura
Kanagawa 247-0061

E-mail support@inon.co.jp

Fax. +81(0)467-48-2178

URL <http://www.inon.jp/>

February 2026