

INON

INON Optical D Cable/Cap W51 Set Type L

Thank you for purchasing INON product

INON Optical D Cable Cap Set Type L connects INON strobe and compatible digital camera housing/Mount Base.

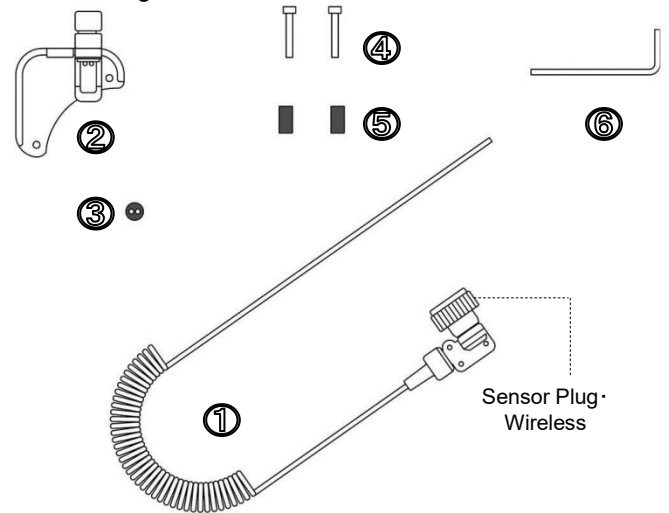
Optical D Cable/Cap W51 Set is exclusively for 「28AD Mount Base·DC35」, 「28LD Mount Base·DC38」 or 「28LD Mount Base·DC43」.

Features

- Reliable slave flashing of [Optical D Cable connection] with fiber optics even under bright condition like under surface or back lit.
- Directly attaches on 「28AD Mount Base」 / 「28LD Mount Base」 for simple and reliable installation of an external strobe.
- Maximum two 「Optical D Cable Type L」 mountable for dual strobe configuration.

Package contents :

• Optical D Cable Type L ①	x1
• Cap W11/W29/W51·	
Shade Panel Unit ②	x1
Optical Guide Cap W6/W11/W13	
W29/W33/W45/W51 Unit	x1
Optical Guide Cap WL	x1
Optical Guide Mirror M	x1
Cap Fixing Dial	x1
Fiber Optics Fixing Dial	x1
Fiber Optics Fixing Rubber	x1
Shade Panel·Right	x1
• Spare Fiber Optics	
Fixing Rubber ③	x1
• Cap Screw ④	x2
• Spacer ⑤	x2
• Allen Wrench ⑥	x1
• This user manual	x1



Compatible housing / Mount Base (as of May 2018)

• Canon WP-DC43	+ INON 28LD Mount Base·DC43
• Canon WP-DC38	+ INON 28LD Mount Base·DC38
• Canon WP-DC35	+ INON 28AD Mount Base·DC35

Compatible strobe (as of May 2018) : • **Wireless compatible strobes (Optical D Cable Type L is attached as it is)**
INON Z-330, S-2000, Z-240 【Type 4】 , D-2000 【Type 4】

• **Wireless non-compatible strobes (Sensor Plug has to be replaced with optional "Sensor Plug · Non-Wireless" (※))**

- INON Z-240 【Type 3/ Type 2/ Type 1】 , D-2000 【Type 3/ Type 2/ Type 1】 , D-2000W, D-2000Wn, D-2000S, D-180, D-180S, Z-220F, Z-220S, Z-220
- INON TTL Sensor Z + INON Z-22
- INON TTL Sensor SB + compatible TTL auto strobe
- INON TTL Sensor YS + compatible TTL auto strobe
- INON Focus Light Controller + INON Z-220F/Z-220S/Z-220/Z-22



**「Sensor Plug · Non-Wireless」
【Optional】**

(※) Refer to an instruction manual 「L-Connector Modification Instruction」 which comes with the optional 「Sensor Plug · Non-Wireless」 for detail of replacement

Connection method: There are two patterns to connect your INON strobe and camera system with this product. Though it is depending on shooting condition or intended use which pattern you use, normally we would recommend connection method (A).

(A) **Using Shade Panel·** : Conventional connection method. 【1st choice】

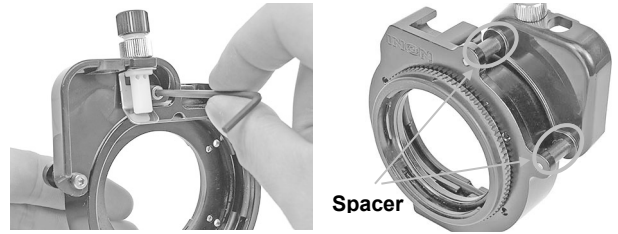
(B) **Using 28AD Mount Base/
28LD Mount Base Diffuser** : For built-in flash use like macro shot. (※) 【special use】

※ : Only when using built-in flash for macro shooting. There could be less accuracy of exposure control when not shading the built-in flash. Refer to boxed column in the last page for detail.

How to attach :

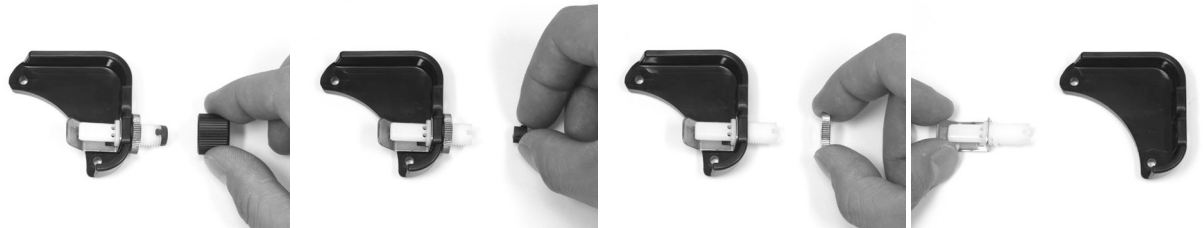
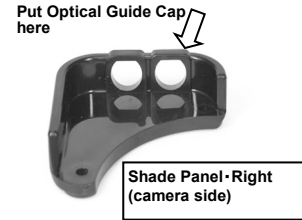
Connection method (A)

- **Attach Cap W11/W29/W51・Shade Panel Unit**
 Replace diffuser panel of 28AD Mount Base /28LD Mount Base with Cap W11/W29/W51・Shade Panel Unit using supplied Allen Wrench. Make sure to put spacers between the Shade Panel Unit and 28AD Mount Unit as shown image right.
Do not tighten too much to avoid damage on shade panel.



Connection method (B)

- Remove Fiber Optics Fixing Dial, Fiber Optics Fixing Rubber and Cap Fixing Dial to dismount Optical Guide Cap WL and Optical Guide Mirror M. Then install those parts on the diffuser panel of 28AD Mount Base/28LD Mount Base in opposite procedure.
Put the Optical Guide Cap on right hole (from camera side) on the diffuser/shade panel. (as shown arrow in the image)



Connection method (A)/(B)

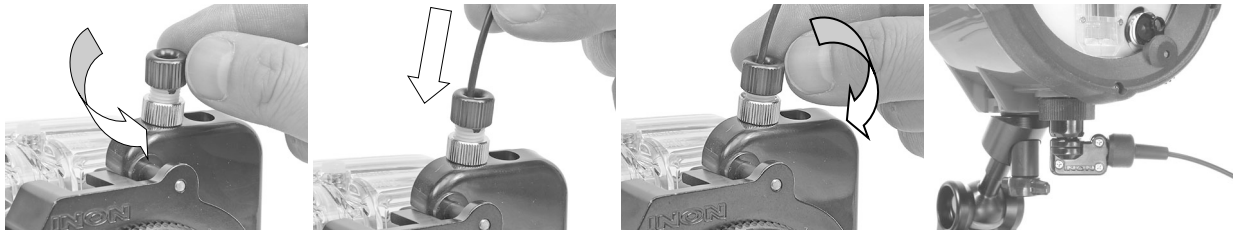
Attach 28AD Mount Base/28LD Mount Base on housing

Refer to user manual of 28 AD Mount Base/28LD Mount Base and attach it on compatible housing.

Connection method (A)/(B)

Attach Optical D Cable Type L

Unscrew Fiber Optics Fixing Dial and inlet an Optical D Cable Type L into a hole of Fiber Optics Fixing Rubber all the way. Then tighten the Fiber Optics Fixing Dial to fix the cable. Maximum two Optical D Cable Type L can be set. Attach the other side of the cable to strobe's slave sensor.

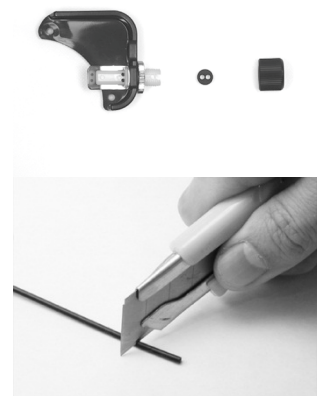


Handling precaution:

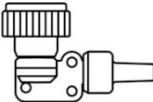
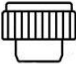

- Optical D Cable Type L has ultra durability (minimum bend radius 2mm) but inner portion could be damaged when bending less than radius of 2mm or excessive shock. And if the cable being bended for long time, it will not back to original shape. Replace with optional 「Replacement Optical D Cable Type L/Optical Cable M Type L」 in case of poor signal transmission.
- When carrying your camera system DO NOT hold the Optical D Cable Type L with being connected to a housing or a strobe to prevent accidental dropping off from the strobe or the housing.

Maintenance :

- Soak the Optical D cable/Cap Set in fresh water (below 30°C / 86°F) for several hours after use to dissolve any salt build up. Blow off water drop by air gun/blower and dry the Optical D Cable/Cap Set Type Lin shaded and well ventilated area. It may take several days to completely dry.
- Especially take care to clean the both edge of the Optical D Cable Type L with the cable removed from Cap W11/W29/W51 Shade Panel Unit to dissolve any salt build up. Scratch or cloud with salt build up on the edge may lead poor signal transmission.
- Be careful not to lose parts of Cap W11/W29/W51 Shade Panel Unit.
- In the event of poor signal transmission resulting from scratch/cloud or necessity to shorten the cable, it is possible to cut the cable to refresh the damaged edge or to get desired length. Refer to our web site below to cut strobe connector side.
- “L Connector Modification Instruction”
http://www.inon.jp/pdf-dl/_userdata/ModifyCableConnector-en.pdf
 When you cut the Optical D Cable Type L, use sharp blade like a razor or a utility knife and cut the edge to make it flat. If you observe roughness on the cable section, cut it again.



- Before installing this product** :
- Please note that housing manufacture has no concern with the installation of this product on the housing. Do not inquire housing manufacture about the installation. Also please note that you have to take full responsibility for the installation.
 - Warranty of housing may be void by installing this product even though warranty has not been expired. Refer to housing user manual/warranty statement for detail.
 - INON Inc. can not take any responsibility for any trouble/damage(damage to housing/housing accessories/camera) resulting from the installation.
 - Should you have trouble like flooding caused by the installation, INON Inc. can not take any responsibility for incidental damage(relevant expense to take a shot etc.)
 - Please perform the installation only if you can accept above conditions. Otherwise do not make the installation.

- Optional Parts** :
- Optical D Cable Type L
① in the image on the first page. Necessary when using 2nd strobe to connect with Cap W11/W29/W51 Shade Panel Unit.
 - Replacement Optical D Cable Type L/Optical Cable M Type L
① in the product image without connector
 - Cap W51 Shade Panel Unit with spare parts
②, ③, ④, ⑤ and ⑥ in the product image.
 - L-Connector Kit (strobe) · Wireless
Replacement strobe connector unit without a cable. Same strobe connector as originally installed on this product. 
 - Sensor Plug · Wireless
Replacement sensor plug unit originally installed on this product. 
 - Sensor Plug · Non-Wireless
Replacement Sensor Plug unit to be replaced with originally installed Sensor Plug to use for Non-Wireless strobes described on the first page of this manual.. 

※ When you use External Strobe especially using External Strobe under Connection method(B)(without Shade Panel) . . .

In Connection method(B) with an External Strobe(slave with built-in flash) or under dual strobe configuration, there might be **possibility to get overexposed image** depending on shooting condition.

This is because minimum total flash output (including built-in flash) beyond necessary light amount for particular shooting condition. **This phenomenon is especially pronounced when using a particular camera (minimum flash output is relatively large) at minimum focusing distance with external strobe without using shade panel.** (You can check minimum flash output of your camera by taking shoot at minimum focus distance with fill-in flash) Following countermeasure would be recommended for correct exposure;

- **Use Connection method(A).**
- **Stop down camera's aperture (= use smaller aperture)**
- **Move away a strobe from a subject**
- **Attach a diffuser on an external strobe [see user manual of strobe]**

Also note that this connection method does not completely shade built-in flash light so **backscatter could be increasingly observed.**

INON Inc.
2-18-9, Dai, Kamakura,
Kanagawa 247-0061 JAPAN
E-mail support@inon.co.jp
Fax. +81(0)467-48-2178
URL <http://www.inon.jp/>

May 2018