

# INON

## INON L-Connector Modification Instruction

### Important Notice

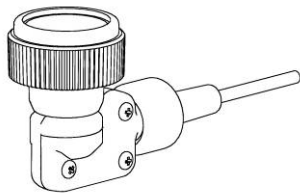
This is a guidance to explain about "Optical D Cable Type L" products how to change its L-Connector from [wireless type] to [non wireless type]. Refer to respective product user manual for detail of each product.

Contact your purchasing dealer for assistance if you are not confident to exercise this modification. INON INC. can not take any responsibility on personal injury, accident or damage on product resulting from the modification.

Illustrations and images may be different from actual parts/products.

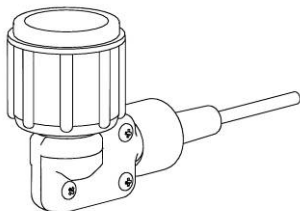
### L-Connector

Pre-installed L-Connector on "Optical D Cable Type L" products is [wireless type] and necessary to replace with [non wireless type] L-Connector to use for non wireless strobes.



#### "Wireless type" L-Connector

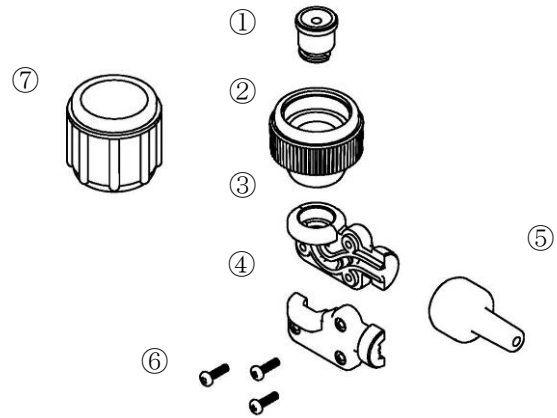
【Compatible strobe】 (as of April 2009)  
Z-240 Type4, D-2000 Type4, S-2000



#### "Non-wireless type" L-Connector

【Compatible strobe】 (as of April 2009)  
Z-240 Type3/Type2/Type1  
D-2000 Type3/Type2/Type1  
S-2000 (both L-Connector type is usable)  
D-2000S Type2/Type1, D-2000W/Wn,  
Z-220 series, D-180series,  
INON TTL Sensor Z/SB/YS, INON Focus Light Controller

### Name of Parts



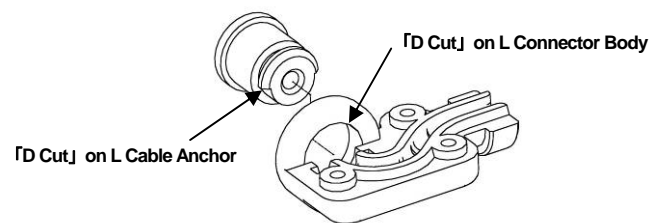
- ① L Cable Anchor
- ② Sensor Plug · Wireless
- ③ L-Connector Body
- ④ L-Connector Cover
- ⑤ L Cable Cover
- ⑥ Screws
- ⑦ Sensor Plug · Non-wireless

Necessary tool : Precision screw driver (+)#0

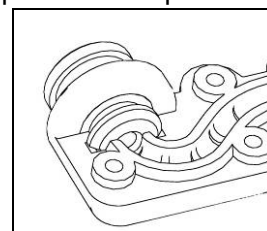
### Construction of 「L-Connector Body」 and 「L Cable Anchor」

To separate 「L-Connector Body」 and 「L Cable Anchor」, it is essential to understand how they are coupled each other.

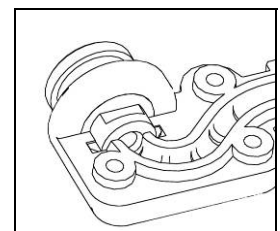
Both parts have "D" shaped portion ( 「D Cut」 ) and these two parts are joined/removed when their 「D Cut」 match each other. When connecting these two parts, after



matching their 「D Cut」, rotate 180 degrees to lock not to separate these parts.

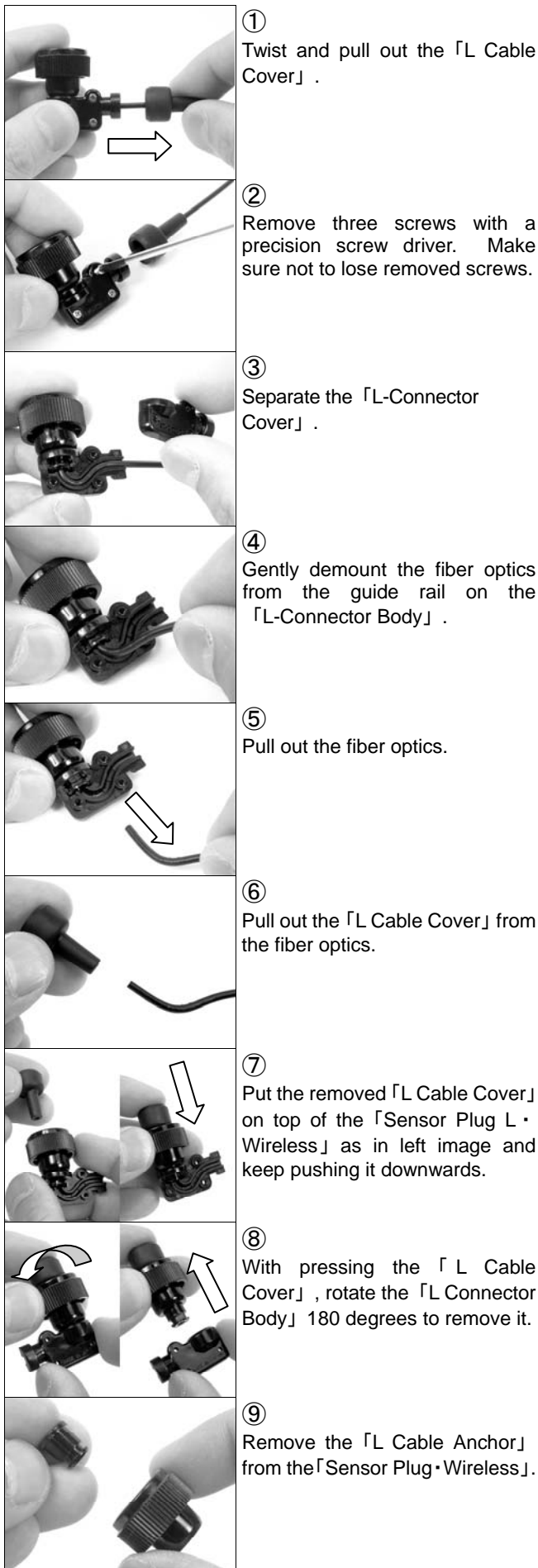


**Unlocked**  
Both 「D Cut」 are not matched.

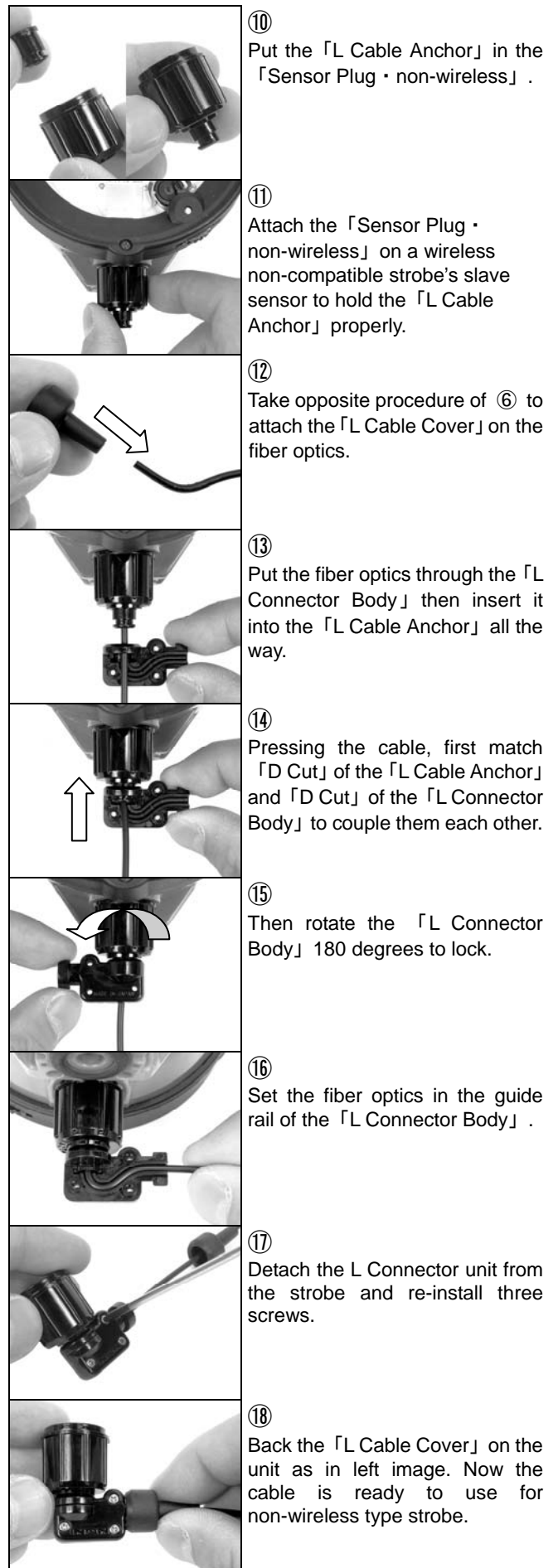


**Locked**  
Both 「D Cut」 are not matched.

## How to disassemble L-Connector · Wireless



## How to assemble L-Connector · non-wireless



INON Inc.  
 2-18-9, Dai, Kamakura, Kanagawa 247-0061 JAPAN  
 E-mail [support@inon.co.jp](mailto:support@inon.co.jp) Fax +81(0)467-48-2178  
 URL <http://www.inon.co.jp/>

April 2009